

# ENTRYCON

Entrance and monitoring system with license plate recognition.

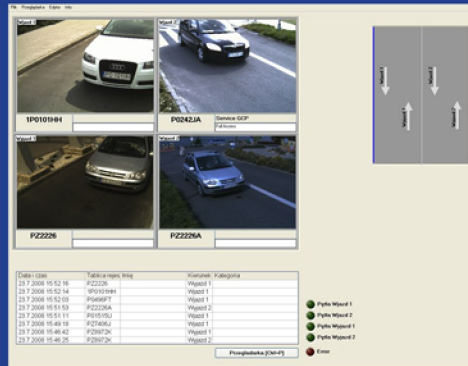


- reads license plate (LP) of vehicles driving through
- compares identified LP with permitted entry database
- signaling elements and entrance devices control
- acoustic or grafical notification rising on vehicle arrival
- data archivation

By unique vehicle identification, the Entrycon system raises security level of parking and entrance systems . Recognizes License plates of passing vehicles. Recognized license plates are compared with permitted entry database. Controls signaling elements and entrance devices (automated pike, semaphore, road block, automated gate, etc.). Raises an acoustic or graphical notification on vehicle arrival. Text or voice registration number announcement. Gathered data archivation (License plate, date, time, direction and location of passage, vehicle photo) Automated vehicle passage may be permanent or limited by specified time (month, day, hour, direction of passage) repeatable or single use. Entrycon may be enhanced by contactless readers of personal or vehicle cards.



Operator's workplace



Control panel



Entry/ Exit

## Usage

- car park
- garage
- warehouse
- secured objects gateways
- city toll systems

## System components

- HD cameras
- evaluation unit
- communication unit
- vehicle detector ( inductor type detector or infrared pike )
- infrared lamps for night vision

## Attributes

- up to 8 HD cameras
- user configurable camera structure of entrance / exit
- combination of LP and overview cameras
- archivation of all system events
- video record for overview cameras
- easy to enhance

## Custom accesories

- sw client for security guard workplace or reception
- entrance devices ( pike, gate )
- signaling elements ( semaphore )
- contactless card revers

